



Duplo

DC-616

Slitter/Cutter/Creaser

DC-616 SPECIFICATIONS	
Speed	Up to 10 pages per minute
Input Paper Size	8.26" x 8.26" to 13" x 26.37" (210 mm x 210 mm to 330.5 mm <sup>1</sup> x 670 mm <sup>2</sup> )
Min. Finished Size	1.89" x 1.97" (48 mm x 50 mm)
Tolerance	± 0.3 mm
Feeder Capacity	3.9" (100 mm)
Paper Weight	110 - 350 gsm (30 lb. bond - 130 lb. cover)
Slits	6 per sheet
Cuts	25 per sheet
Creases	20 per sheet
Memory	80 jobs using the control panel
Standard Features	Air knife, card stacker, fan registration <sup>3</sup> , semi-automatic gutter slit deflectors <sup>4</sup> , 3-step crease depth adjustment and control panel
Options	Long paper tray, ultrasonic double feed detection sensor, CCD scanner, perforating unit, PC, PC Arm, PC Controller software, PC pole mount*
Power Requirements	120v 50/60 Hz
Dimensions (WxDxH)	63" x 25" x 42"
Weight	320 lbs.

\* Must purchase PC Arm

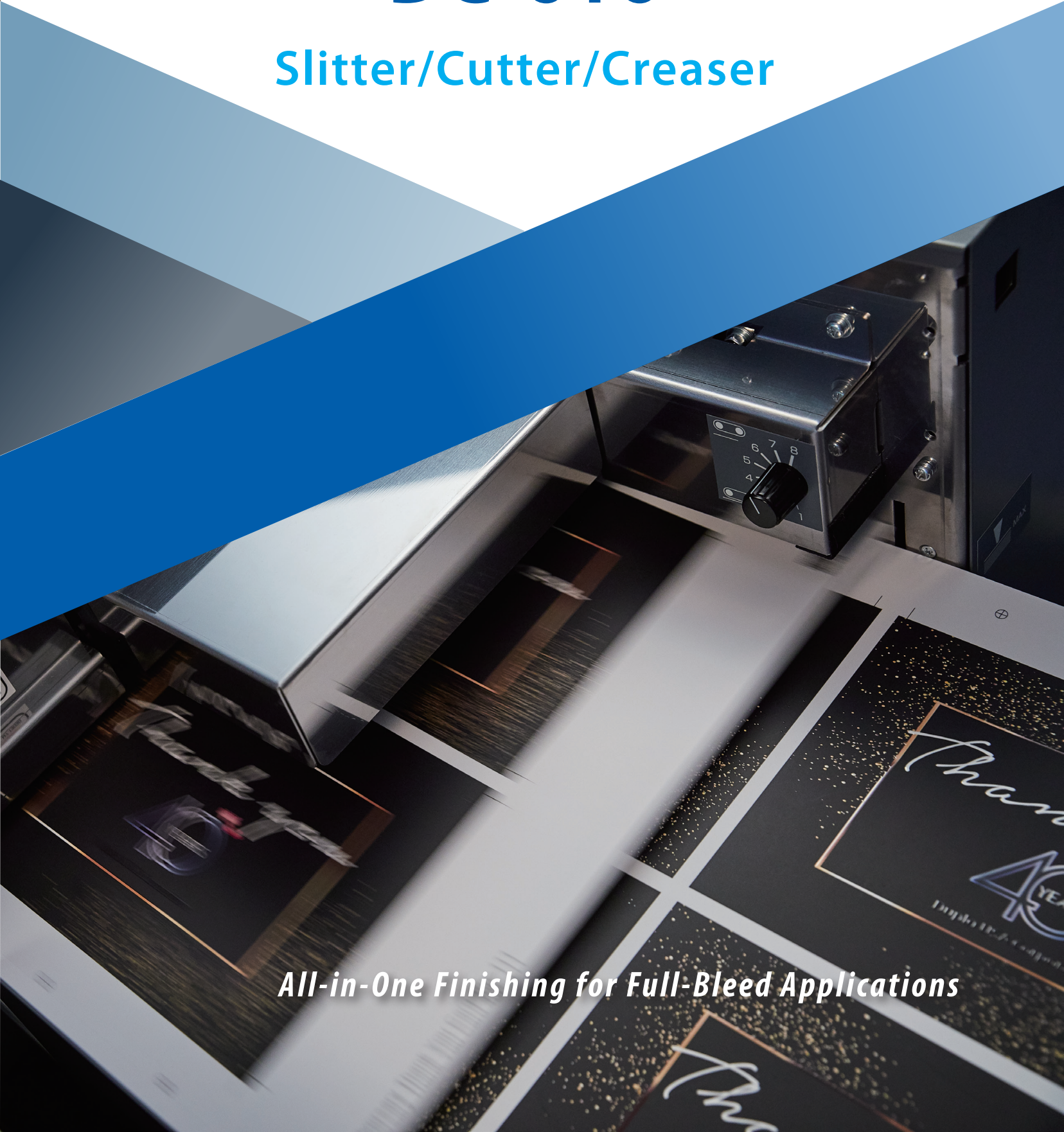
<sup>1</sup> Certain change with the software and hardware setting is required.

<sup>2</sup> Length can be increased to 670 mm when using long paper feed tray.

<sup>3</sup> Feed belts are set at a 2 degree angle towards the non-operator side which allows the paper to align properly before being processed through the machine.

<sup>4</sup> Gutter stits must be between 5-15 mm in order to be deflected properly.

Production rates are based on optimal conditions and may vary depending on stock and enviromental conditions.  
As part of our continuous product improvement program, specifications are subject to change without notice.



All-in-One Finishing for Full-Bleed Applications



**GALAXY AUTOMATION SDN. BHD.** (324090-U)

Digital Imaging & Print Systems Integrator

宇宙科技有限公司

Global Business & Convention Centre, Level 3, No. 8, Jalan 19/1, Section 19,  
46300 Petaling Jaya, Selangor, Malaysia. Tel: +603-7957 2530 / 2454 Fax: +603-7957 2617 (Sales) / 603-7954 1392 (Technical)  
Email: sales@galaxyauto.com.my / URL: www.galaxyauto.com.my



## DC-616 Slitter/Cutter/Creaser

*The DC-616 Slitter/Cutter/Creaser is the ideal finishing solution for the short-run, on demand digital printer. Designed to eliminate white borders and prevent toner cracking on color applications, this all-in-one finisher can process up to 6 slits, 25 cuts and 20 creases in a single pass with a variety of options available for added versatility. Offering a fully automatic setup and quick changeovers, the DC-616 can finish a wide array of full-bleed digital applications including 24-up business cards, greeting cards, invitations and brochures.*



### Easy Job Setup

With no experience required, operators can finish jobs within minutes. The DC-616 can be set up via the control panel where up to 80 jobs can be saved in memory or use the PC Controller software (sold separately) to operate the system from a PC. The PC Controller software makes it simple for operators to create new jobs, make adjustments and save virtually an unlimited number of jobs on the hard drive for fast changeovers.



### Duplo's Signature Feed System

With a 3.9" (100mm) capacity stacker and air suction belt feed system, the DC-616 ensures a consistent and productive operation. Two fans provide the air suction and separation while the air knife delivers air flow to the stack to reduce static between the sheets. The system feeds from the top of the stack to minimize scuffing and marking. Add the ultrasonic double feed sensor (sold separately) to detect when two or more sheets have been fed.



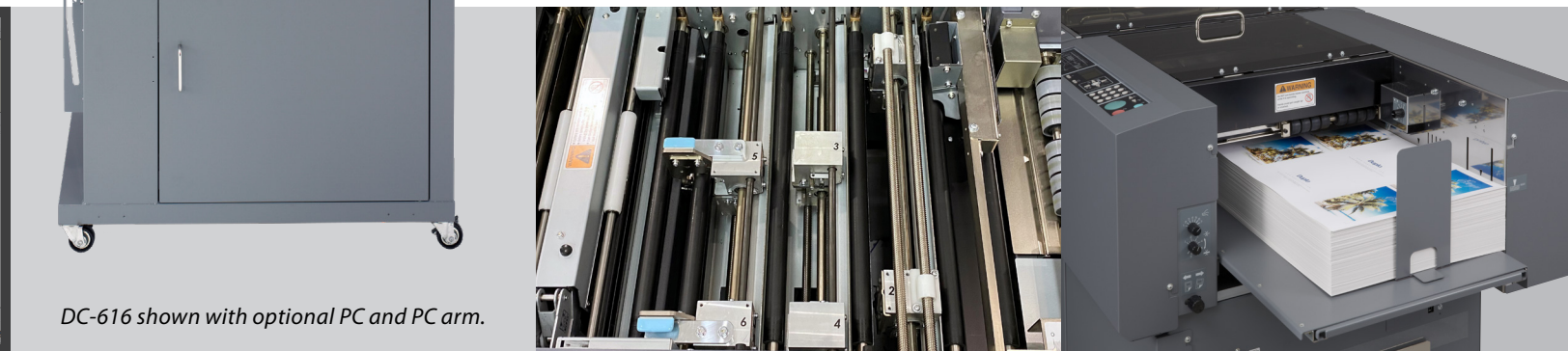
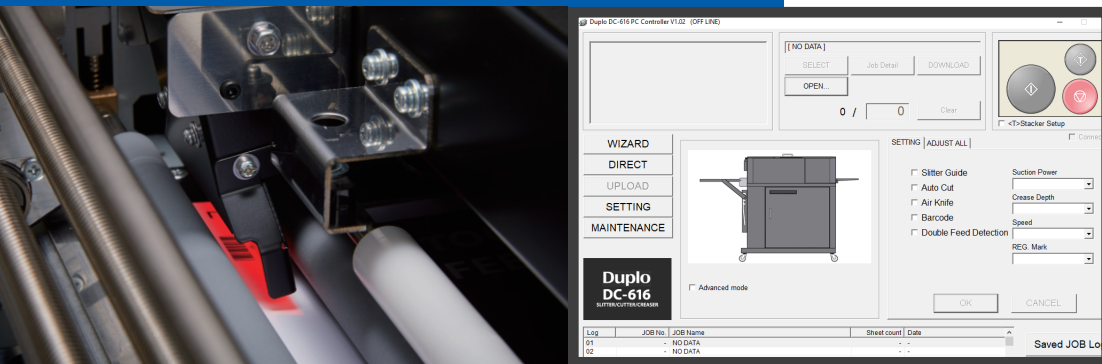
### Precision Finishing Second to None

The DC-616 comes equipped with rotary slitters, a guillotine cutter and a depth-adjustable creaser, offering the versatility of multiple devices without the manual and time-consuming set ups. Margins are trimmed horizontally by the slitter and vertically by the cutter and are automatically deposited into the waste bin. Only the finished pieces are delivered on the exit tray. The card stacker keeps smaller pieces, such as business cards, neatly stacked and can be removed when running larger applications.

Creasing digitally-printed output prior to folding prevents toner cracking and unattractive fold lines. The creaser utilizes male and female matrix channels to create a hinge along the sheet to be folded with ease. Creasing performance can be optimized by using the adjustable 3-step depth crease for various paper types and weights.



DC-616 shown with optional PC and PC arm.



### Automatic Barcode and Registration Mark Scanner

Add the CCD scanner (sold separately) to read barcodes and registration marks. By reading the barcode, the unit can recall any job stored in memory and perform changeovers automatically. The CCD scanner can also read REG marks and compensate for the sheet-by-sheet image shift in both horizontal and vertical directions.



### Automated Prepress & Finishing with EFI Fiery Print Servers

Save up to 70% in set up time by automating job preparation and eliminating manual data entry with Fiery Impose® in Fiery Driven™ print environments. For common jobs, such as business cards and greeting cards, Duplo provides imposition templates to use in Fiery Impose that match the finishing templates on the DC-616. This integration offers timesaving workflows, reduces errors, and accelerates turnaround times. For more information, download the how-to guides and templates at [fiery.efi.com/htg-impose-duplo](http://fiery.efi.com/htg-impose-duplo).



### Perforating Unit

A perforating option can be added and can be easily attached to the exit of the machine. It comes with two manually-adjustable tools to perform perforations along the length of the sheet. For non-perforating jobs, the unit can be easily removed.

### Finish Full Bleed Applications On Demand

- 24-up business cards
- Postcards
- Greeting cards
- Invitations
- And much more!
- Brochures
- Menus
- Direct mail pieces
- Book covers

- Up to 10 pages per minute
- Paper weight up to 350 gsm
- Up to 6 slits, 25 cuts & 20 creases
- 3.9" feed capacity stacker
- Options include PC Controller software, CCD scanner, perforating unit, ultrasonic double feed detection sensor and long paper tray.