

# DC-646 Slitter / Cutter / Creaser

## SPECIFICATIONS

Feeder Capacity	3.9" (100 mm)	
In-Feed Paper Size	Width	8.26" x 14.56" (210 - 370 mm)
	Length	8.26" x 26.37" (210 - 670 mm)
Finished Size	Minimum (WxL)	1.89" x 1.97" / 48 mm x 50 mm
Paper Weight	110 - 350 gsm / 80 lb. text - 130 lb. cover	
Speed (3-Step Setting)	30 ppm (A4 SEF, lead/trim 10 mm, center crease)	
	22 ppm when using CCD	
Image Shift Compensation	Reading modes: every sheet, every "x" sheet, adjust over "x" mm shift only, first sheet only	
Tolerance	±0.2 mm	
Slits	6 standard slitter tools (2 margin slitters, 4 center slitters)	
	Optional slitter module (the module carries 2 slitter tools) can be installed for a maximum of 8 slits	
Cuts	Maximum 30 cuts per sheet	
Creases	Maximum 20 creases per sheet	
Crease Depth Adjustment	3 steps (from control panel)	
Exit Tray Capacity	5.9" (150 mm)	
Card Stacker (Standard)	Type	Stacker
	Capacity	3.54" (90 mm)
	Stackable card size	Width: 1.89" x 14.56" (48 - 370 mm) Length: 1.97" x 7.87" (50 - 200 mm)
Standard Features	250 job memory in main unit; test feed (1 sheet); air knife; side air; feed skew adjustment; pause feeding; ultrasonic double-feed detection; CCD scanner for automatic job recall via barcode reading and image drift compensation via registration mark reading; on-the-fly rejection; card stacker; job lock feature; batch separation; waste box; emergency stop switch; cleaning mode; PC controller software; PDF template generator, PC arm mount	
Options	Rotary tool module (includes 2 each of perf, micro perf, score, slit-score), can also do strike perforation; Slitter module (2 independent sets of slitters); Cross perforating module (includes 1 each of perf, micro perf, slit-score), can also do strike perforation. (All modules require a PCB kit, however only one kit is needed for the use of multiple modules); 48" Long Conveyor Stacker; Integrated Folding System (IFS); PC arm and PC	
Power Consumption	115V: 5.5A 670W, 60Hz	
Dimensions (WxDxH)	In use: 90" x 34" x 44" / 2300 mm x 875 mm x 1120 mm	
Required Footprint (WxDxH)	69" x 35" x 53" / 1760 mm x 880 mm x 1335 mm	
Weight	Gross	760 lbs./ 345 kg
	Net	617 lbs./ 280 kg

As part of our continuous product improvement program, specifications and descriptions are subject to change without notice.



DC-646 Integrated Folding System

# Duplo

# DC-646

## Slitter / Cutter / Creaser



Shown with optional PC and PC arm.

**Versatile, High Performance**  
**All-In-One Finishing for Digital Color Documents**



**GALAXY AUTOMATION SDN. BHD.** (324090-U)

Digital Imaging & Print Systems Integrator

宇宙科技有限公司

Global Business & Convention Centre, Level 3, No. 8, Jalan 19/1, Section 19,

46300 Petaling Jaya, Selangor, Malaysia. Tel: +603-7957 2530 / 2454 Fax: +603-7957 2617 (Sales) / 603-7954 1392 (Technical)

E-mail: sales@galaxyauto.com.my / URL: www.galaxyauto.com.my



# Versatile, High Performance All-In-One Finishing for Digital Color Documents

The DC-646 Slitter/Cutter/Creaser is Duplo's versatile digital color finisher providing printers the ability to create a multitude of unique full-bleed applications with more efficiency and flexibility. Performing up to 8 slits, 30 cuts and 20 creases in a single pass, the DC-646 eliminates white borders and prevents toner cracking on fold lines up to 30 sheets per minute and also offers optional rotary tool and cross perforating modules, both with strike perforating capabilities, for increased versatility. With the DC-646, users can produce 24-up business cards on 12" x 18" or 36-up on 14" x 26" paper sizes, slit-score greeting cards, micro-perforated coupons, direct mailers with tear-away cards, and much more!

## Easy Job Setup From a PC

The DC-646 Slitter/Cutter/Creaser is easy for anyone to use and even the most inexperienced operator can finish a job within minutes. The DC-646 comes equipped with the PC Controller software, enabling users to operate the system from a PC. The wizard makes it simple for operators to create new jobs, make adjustments, and save virtually an unlimited number of jobs on the hard drive for faster changeovers.

A job template library is included with the PC Controller which can be used to produce common applications. To ensure print jobs are optimized for finishing on the DC-646, a sample PDF is also included in the template library to make sure margins and gutters are set correctly. Operators can now also generate PDF template files for jobs created on the PC Controller.

In addition, the DC-646 comes built-in with a CCD scanner, enabling it to recall any job stored in memory simply by reading the printed barcode and automatically setting up the job. The scanner also reads registration marks and compensates for the sheet-by-sheet image shift in both directions, delivering accurately finished pieces every time.

- Eliminates white borders and prevents toner cracking with up to 8 slits, 30 cuts, and 20 creases in a single pass
- Built-in CCD scanner reads barcodes to automatically recall any job stored in memory as well as registration marks to correct image shifting
- Compatible with the Integrated Folding System, the DC-646 IFS can slit, cut, crease and fold all in one pass
- Optional Rotary Tool and Cross Perforation modules perform perforations, micro-perforations, scores, slit-scores and strike perforations
- A job template library is included with the PC Controller software for common applications
- Achieves 70% setup time saving via integration and automation with Fiery Impose in Fiery Driven print environments

## Superior, High Capacity Feeding

The DC-646 Slitter/Cutter/Creaser features a 3.9" (100 mm) feed capacity stacker and a unique top air-suction feeding system to maintain the consistency and productivity throughout the operation. The high capacity stacker means the system will run for a longer period of time without having to reload while the air-suction system feeds from the top of the stack to reduce scuffing and marking on the sheets.

Additionally, the DC-646 comes equipped with side air, an air knife and ultrasonic sensor for improved feed consistency. The air knife provides additional air flow to the stack and reduces static on the sheets. The ultrasonic sensor detects when two or more sheets have been fed and automatically sends rejected sheets into the reject tray.

Create a range of offset and digital color printing applications such as:

- Business cards
- Greeting cards
- Invitations
- Brochures
- Menus
- Direct mail pieces
- CD/DVD case inserts
- Tent cards
- Book covers



## Increased Versatility

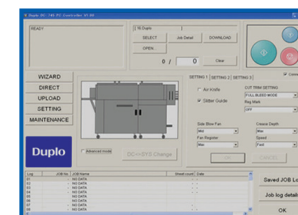
Processing up to 8 slits, 30 cuts and 20 creases in a single pass, the DC-646 finishes full-bleed documents up to 26.4" (670 mm) in length. To further extend its versatility, optional modules can be added to meet a wider array of customer demands. The DC-646 offers three areas where operators can mix and match any optional modules to produce a variety of unique applications.

- **Rotary Tool Module** performs perforations, micro-perforations, scores, slit-scores, and strike perforations (across the length of the sheet)
- **Cross Perforating Module** performs perforations, micro-perforations, slit-scores, and strike perforations (across the width of the sheet)
- Add an extra **Slitting Module** with 2 more slitters for a maximum of 8 slits per sheet (6 slits standard + 2 slits optional)

- The DC-646 is also compatible with the **Integrated Folding System (IFS)**, creating an even more versatile finishing solution that slits, cuts, creases, scores, perforates, slit-scores, micro-perfs, and folds – all in one pass
- Optional **48" Long Conveyor Stacker** allows for higher stacking capacity and unloading while machine is running

With the DC-646, users can produce unique applications such as:

- 24-up business cards (without an additional module required)
- "L" perforated business card within a postcard
- Slit-score, lay-flat greeting cards
- Direct mailers with "T" or "L" shape perforated coupons
- Event tickets with multiple perforations



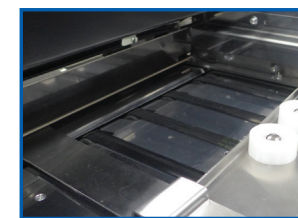
PC Controller enables users to easily and quickly operate, create and adjust jobs.



Customer-replaceable modules help create versatile applications with the widest range of substrates. The color codes indicate module locations, making it easy for the user to install correctly.



The CCD scanner can read barcodes to recall any job stored in memory as well as the registration mark to correct any image shifting.



Adjustable in four steps, the vacuum registration table precisely aligns each sheet, maintaining a high degree of precision finishing.



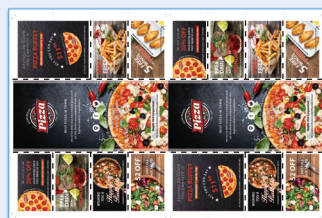
Automatic feed tray features a vacuum feeding system that prevents marking, miss or double feeding. The air knife aids in sheet separation.



Capable of running business cards without an additional module, the attachable business card stacker with individual guides guarantees neatly stacked outputs.

## DC-646 Sample Applications

2-up Coupons on 13" x 19" with T-shape Offset Perforated Cards



finished pieces

2-up Flyers on 12" x 18" with T-shape Perforated Cards



finished pieces

1-up Flyer on 12" x 18" with One Fold and T-shape Perforated Cards



fold with IFS in one pass finished pieces

## 2-up 5-panel Accordion Card on 12" x 18" Application Workflow



finished pieces

tear-away coupon or reply card

slit, cut, crease, strike perf, and cross perf in one pass

sample application